

New for Quilting

Straight stitching or free motion sewing in 12" x 5.5" area



J-150QVP

JUKI



Quilt Virtuoso Pro
J-150QVP



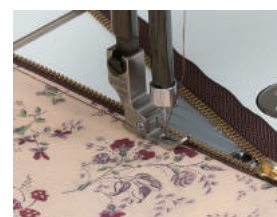
New for Quilting
Straight stitching or free motion sewing in 12" x 5.5" area



Specifications

Sewing speed	150 - 2,500spm
Stitch length	0 - 5mm
Needle bar stroke	30.7mm
Lift of presser foot	8.5mm/13.5mm
Needle	DBx1 #9 - 18
Lubricating oil	JUKI New Defrix Oil No.1 or JUKI CORPORATION GENUINE OIL 7
Dimensions of sewing machine	69W x 68.4H x 29L (cm)
Size of bed	51.7W x 17.8L (cm)
Weight of sewing machine	40.5kg
Rated voltage/Power consumption	120V/1.5A 60Hz
Accessories	Standard presser foot, 1/4" presser foot, Quilting(ruler) foot, Bobbins(4pcs.), Needles(DBx1), Thread stand components, Thread stand bracket, Thread guide pin, Screwdriver(small), Screwdriver(medium), Hexagonal wrench(3mm), Cleaning brush, Spool cap, Sewing machine cover, Oiler

Optional Accessories



Hinged Zipper Foot

Part No. A9842D250A0



Invisible Zipper Foot

Part No. A9841D25AA0



Smooth Foot

Part No. A9840D250A0



Compensating Foot
(Right 1.5mm)

Part No. A9843D25AA0



Regular Hinged Foot
(1/4")

Part No. 40171426

Standard Accessory Parts



Standard Presser Foot

For regular sewing.



Quilting(Ruler) Foot

For regular free motion and ruler works.



1/4" Presser Foot

Creates even 1/4 inch seams for perfect piecing.

Industrial presser feet, throat plates and gauges can be used.

JUKI
JUKI CORPORATION

2-11-1, TSURUMAKI, TAMA-SHI, TOKYO
206-8551, JAPAN
<http://www.juki.co.jp>



This is an eco-friendly product which complies JUKI ECO PRODUCTS standards for protecting the environment.

- The sewing machine complies with the "JUKI Group Green Procurement Guidelines" on the use of hazardous substances, which is stricter than other restrictions, such as those of the RoHS Directive.

For details of JUKI PRODUCTS, refer to:
http://www.juki.co.jp/eco_e/index.html

*The RoHS Directive is an EU Directive limiting the use of 6 hazardous substances (lead, hexavalent chromium, mercury, cadmium, PBB and PBDE) in electrical and electronic equipment. The JUKI Green Procurement Guideline is the voluntarily established criteria to eliminate not only the aforementioned six substances, but also other ones which also adversely affect the environment.

Quilt Virtuoso Pro
1500QVP

New for Quilting



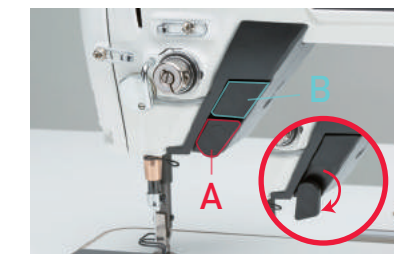
Industrial machine quality

Experience the quiet, durable and comfortable operation of JUKI industrial sewing machines, the global market share leader. A sewing speed of 2,500 spm allows you to work even faster. Seams are finished beautifully and securely.



Large work surface

The generous 12-inch-wide space under the arm and large, smooth table are useful for all sewing projects, not only quilts.



Custom switches

Two easily accessible switches (A and B) can be assigned frequently used operations, such as moving the needle up/down (inch sewing), and raising the presser foot.



Clean stitching at beginning of sewing

By using the needle thread presser device, the end of the needle thread at the beginning of sewing can be tucked under to the wrong side of the fabric, making it invisible from the right side of the fabric. The top surface is neatly finished, saving you the trouble of picking the threads.

Right side



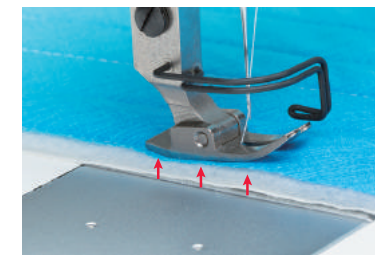
One-touch switching to free motion mode

The machine is equipped with a button for switching between the frequently used straight stitch mode and the free motion mode. Switch to the appropriate mode with one touch of a button.



Micro-lifter function (float function)

By inputting a negative value for the presser foot pressure, fabric can be sewn with the presser foot floating at a height of 0 to 4 mm. This helps when sewing thick seams and reduces uneven feeding when quilting.



Digitalized Control Panel



4.3" color LCD operation panel

The stitch length, thread tension, presser foot pressure, feed operation, etc., are all digitally controlled. Settings can easily be confirmed and specified from this large panel.

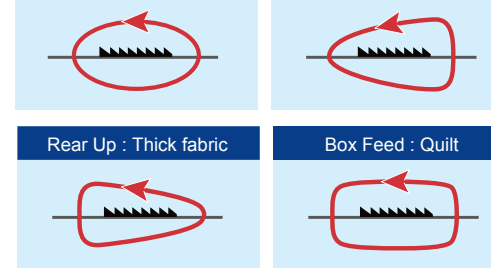


Bobbin thread counter

With the count changing by one for every 10 stitches sewn, the counter (amount of bobbin thread remaining) can be used as a guide for when to replace the bobbin thread. The counter can count up or down to a preset value.

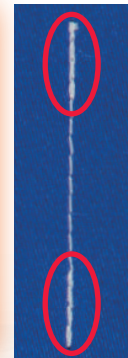


Standard : Normal fabric Front Up : Thin fabric, Knit



Four feed operation types

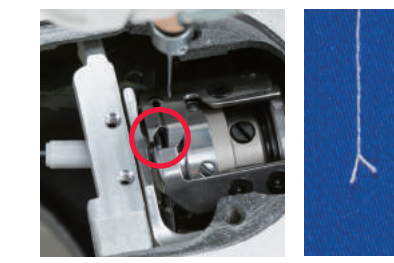
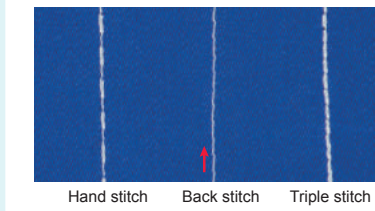
From the operation panel, you can easily select the appropriate feed operation for the item being sewn.



Settings for automatic reverse feed stitching

You can set the machine to automatically sew reverse stitching at the beginning and at the end of sewing. You can also specify the sewing pattern and the number of stitches to be sewn.

Other Features



Automatic thread trimming (3 mm of thread remaining)

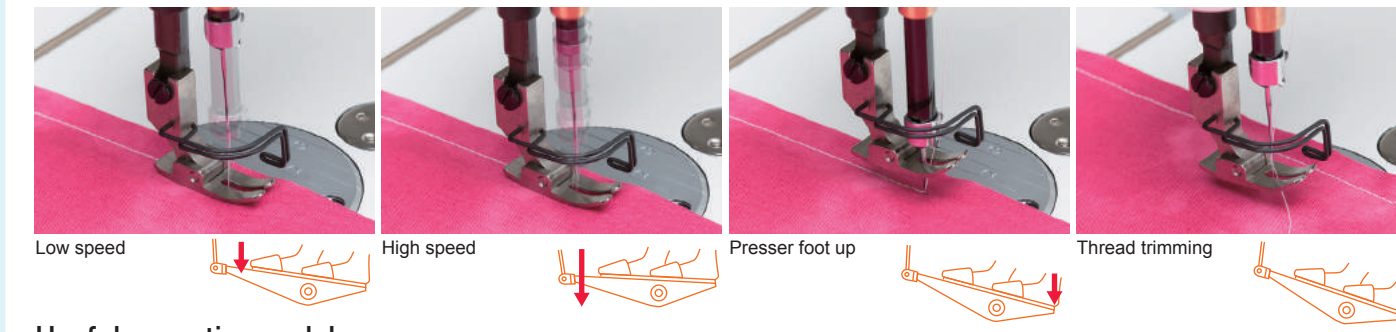
The double-edge driven rotary knife system can leave 3 mm or less of thread after thread trimming, eliminating the need for thread picking.

Adjustable brightness of LED light

Using an easily accessible switch, the brightness can be adjusted to one of five levels.

Custom pitch

Up to 20 sewing designs consisting of your favorite combination of stitch lengths can be registered. Even stitching similar to hand stitching is possible.



Useful operation pedal

The operation pedal, integrated into the table, provides a reliably large stepping area. High-speed sewing, low-speed sewing, stopping sewing, raising the presser foot, and thread trimming can easily be performed depending on how much you depress the pedal.



Aluminum bobbins

Light aluminum bobbins reduce variations in the bobbin thread tension due to the amount of bobbin thread remaining.



Easily insert and remove thick fabrics

When the presser foot is raised, the feed dog is automatically lowered. In addition, the presser foot can be raised to a height of up to 13.5 mm, allowing thick fabrics to easily be inserted and removed.



Maintenance-free

Simply filling the oil tank through the filler opening at the front of the sewing machine ensures that the hook is automatically lubricated.